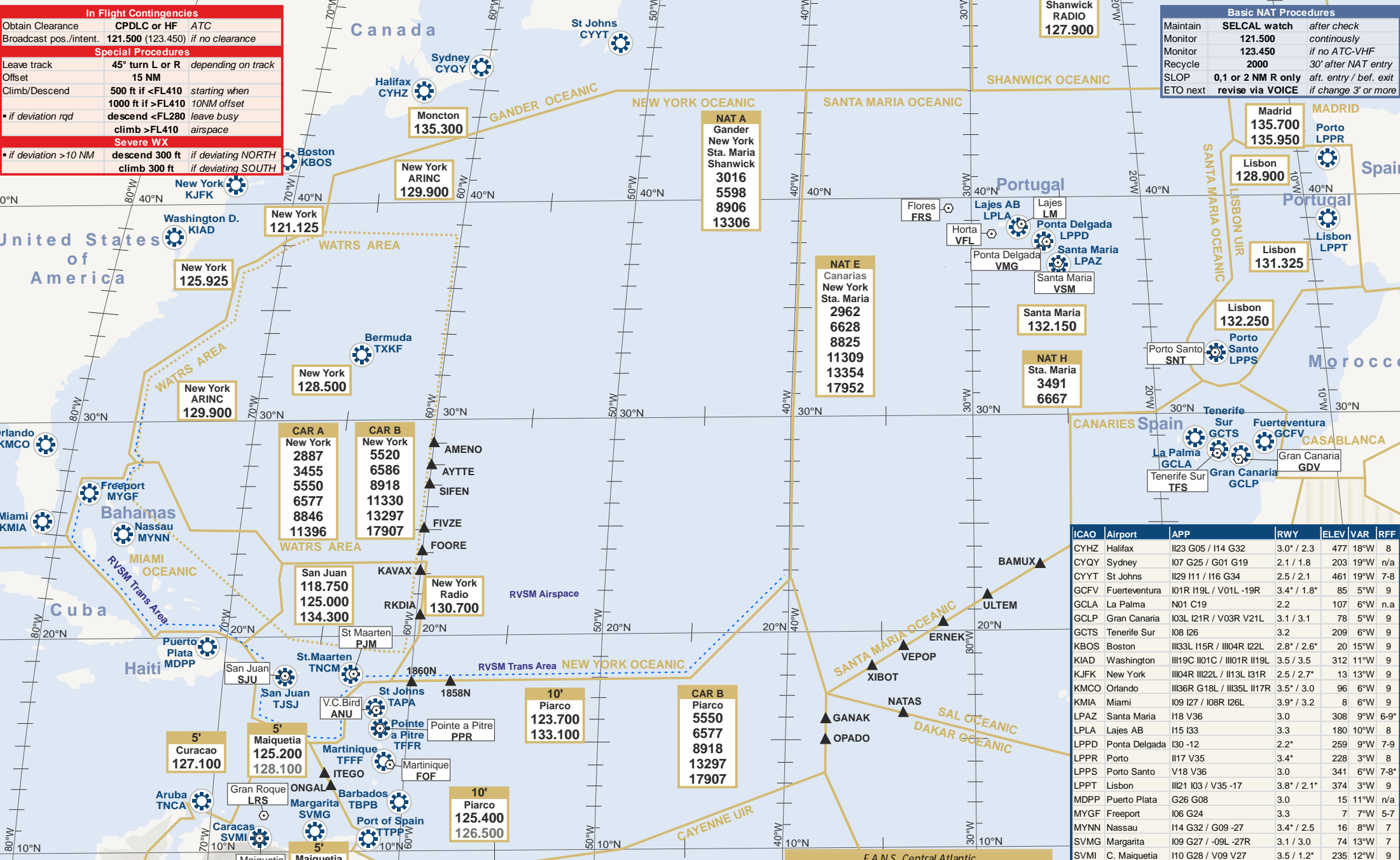


In Flight Contingencies		
Obtain Clearance	CPDLC or HF	ATC
Broadcast pos./intent.	121.500 (123.450) if no clearance	
Special Procedures		
Leave track	45° turn L or R	depending on track
Offset	15 NM	
Climb/Descend	500 ft if <FL410	starting when
	1000 ft if >FL410	10NM offset
	descend <FL280	leave busy
▪ if deviation reqd	climb >FL410	airspace
Severe WX		
▪ if deviation >10 NM	descend 300 ft	if deviating NORTH
	climb 300 ft	if deviating SOUTH

Basic NAT Procedures		
Maintain	SELCAL watch	after check
Monitor	121.500	continuously
Monitor	123.450	if no ATC-VHF
Recycle	2000	30' after NAT entry
SLOP	0,1 or 2 NM R only	aft. entry / bef. exit
ETO next	revise via VOICE	if change 3' or more



Central Atlantic
 V5.02.13 Update: 29 AUG 2013
NOT FOR NAVIGATIONAL PURPOSES
 Further Details: www.planningcharts.de
 Contact: feedback@planningcharts.de

New York Oceanic Clearance		
NOTAM A0117/13		
All a/c departing NAM/CAR/SAM airports for NY OC		
Part of Clearance	ATC unit	when
ROUTING	Delivery	at Departure AD
ALT and SPD	local ATC	prior entry

HF Initial call for OCA with ADS or CPDLC		
Callsign		AIRLINE 123
Capability		CPDLC or ADS
Only 1 option applies:	State:	next
▪ if next sector is OCA	next OCA	
▪ if next sector is domestic		
▪ if on OTS:	NAT track	TRACK _
▪ if random route:	last 2 OCA fixes	
SELCAL Check		SELCAL _ _

F A N S Central Atlantic			
Canaries	GCCC	30-15'	ADS CPDLC
Cayenne	SOOO	45-30'	ADS CPDLC
Dakar	GOOO	45-15'	ADS CPDLC <i>primary</i>
Gander	CZQX	45-15'	ADS CPDLC FMC
New York	KZNY	45-15'	ADS CPDLC
Sal	GVSC	45-15'	ADS CPDLC
Santa Maria	LPPD	45-15'	ADS CPDLC FMC
Shanwick	EGGX	45-15'	ADS CPDLC FMC

ICAO	Airport	APP	RWY	ELEV	VAR	RFF
CYHZ	Halifax	I123 G05 / I14 G32	3.0° / 2.3	477	18°W	8
CYQY	Sydney	I07 G25 / G01 G19	2.1 / 1.8	203	19°W	n/a
CYYT	St Johns	I129 I11 / I16 G34	2.5 / 2.1	461	19°W	7-8
GCFV	Fuenteventura	I01R I19L / V01L -19R	3.4° / 1.8*	85	5°W	9
GCLA	La Palma	N01 C19	2.2	107	6°W	n.a
GCLP	Gran Canaria	I03L I21R / V03R V21L	3.1 / 3.1	78	5°W	9
GCTS	Tenerife Sur	I08 I26	3.2	209	6°W	9
KBOS	Boston	I133L I15R / I1104R I22L	2.8° / 2.6*	20	15°W	9
KIAD	Washington	I119C I101C / I1101R I19L	3.5 / 3.5	312	11°W	9
KJFK	New York	I1104R I122L / I131L I31R	2.5 / 2.7*	13	13°W	9
KMCO	Orlando	I1136R G18L / I1135L I17R	3.5° / 3.0	96	6°W	9
KMIA	Miami	I09 I27 / I08R I26L	3.9° / 3.2	8	6°W	9
LPAZ	Santa Maria	I18 V36	3.0	308	9°W	6-9*
LPLA	Lajes AB	I15 I33	3.3	180	10°W	8
LPPD	Ponta Delgada	I30 -12	2.2*	259	9°W	7-9
LPPR	Porto	I117 V35	3.4*	228	3°W	8
LPPS	Porto Santo	V18 V36	3.0	341	6°W	7-8*
LPPT	Lisbon	I1121 I03 / V35 -17	3.8° / 2.1*	374	3°W	9
MDPP	Puerto Plata	G26 G08	3.0	15	11°W	n/a
MYGF	Freeport	I06 G24	3.3	7	7°W	5-7
MYNN	Nassau	I14 G32 / G09 -27	3.4° / 2.5	16	8°W	7
SVMG	Margarita	I09 G27 / -09L -27R	3.1 / 3.0	74	13°W	7
SVMI	C. Maiquetia	I10 G28 / V09 V27	3.5 / 1.2*	235	12°W	9
TAPA	St Johns	V07 V25	2.2*	62	15°W	8
TBPB	Barbados	I09 G27	3.3	169	15°W	9
TFFR	Martinique	I09 G27	2.7*	16	15°W	7-9
TFFR	Pointe a Pitre	I12 G30	2.8*	36	15°W	1-9*
TJSJ	San Juan	I08 G26 / I10 -28	2.9 / 2.4	9	13°W	8
TNCA	Aruba	I11 G29	2.7*	60	10°W	9
TNCM	St Maarten	G10 -28	2.2*	13	14°W	n/a
TTPP	Port of Spain	I10 G28	3.1	58	15°W	9
TXKF	Bermuda	I30 G12	2.9	12	15°W	9*